

# VIRPLAST

**manici in plastica  
componenti  
ghiere per pennelli**

**plastic handles  
components  
ferrules for paint brushes**



La ViPLAST è attiva da 35 anni nel settore dello stampaggio delle materie plastiche e da sempre si propone come partner per coloro che necessitano di produrre articoli in plastica.

Da circa 15 anni siamo presenti anche nel mercato degli articoli per pennelli iniziando con la produzione di manici in plastica, assicelle, ghiera ed altri componenti per l'industria del pennello.

Gli articoli di nostra produzione sono realizzati con le migliori materie prime e sono tenuti in costante aggiornamento in modo da offrire prodotti sempre in linea con le esigenze del settore.

Questo nuovo catalogo rappresenta solo l'attuale produzione della ViPLAST per il mercato dei pennelli.

Il settore infatti è in continua evoluzione e così pure la ViPLAST è sempre attenta alle esigenze ed alle necessità dei propri clienti con nuovi prodotti.



ViPLAST has been working in the moulded plastics sector for over 35 years, collaborating with customers who need to produce articles in plastic.

Over the last 15 years we have also been active in the paintbrush sector, producing plastic handles, plastic heads for wall brushes, ferrules and other components for the paintbrush industry.

The articles we produce are made with top quality raw materials and are kept constantly updated, so as to offer products in line with the demands of the market.

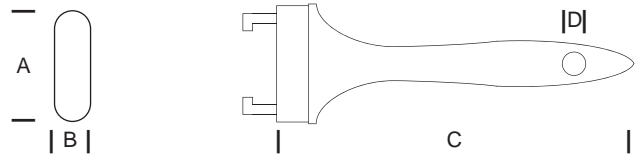
This new catalogue shows only the articles which are currently produced by ViPLAST for the paintbrush sector.

In fact, this sector is in constant evolution so that ViPLAST too is ever aware of the needs and requirements of its customers, offering them new products.

## Art. 0100



Manico plastica per pennellessa  
Plastic handle for flat paint brush

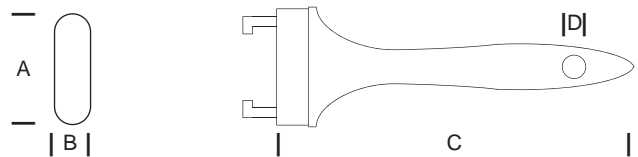


misura		20x15	30x15	40x15	50x15	60x15	70x15	80x15	100x15
A	mm.	19	29	39	48,4	59	69	89	99
B	mm.	12	12,5	13,2	14	14	14	14	14
C	mm.	114	120	126	130	136	140	143	147
D	mm.	10	10	10	10	10	10	10	10

## Art. 0102



Manico plastica a due colori per pennellessa  
Two colours plastic handle for flat paint brush

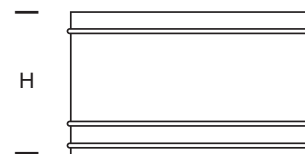


misura		20x15	30x15	40x15	50x15	60x15	70x15	80x15	100x15
A	mm.	19	29	39	48,4	59	69	89	99
B	mm.	12	12,5	13,2	14	14	14	14	14
C	mm.	114	120	126	130	136	140	143	147
D	mm.	10	10	10	10	10	10	10	10

## Art.0110 BS



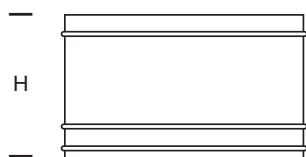
Ghiera banda stagna per pennellessa  
Tin plated ferrule for flat paint brush



misura		20x15	30x15	40x15	50x15	60x15	70x15	80x15	100x15
H *	mm.	28	28	28	32	32	34	34	34

Ghiera nichelata per pennellessa  
Nikel plated ferrule for flat paint brush

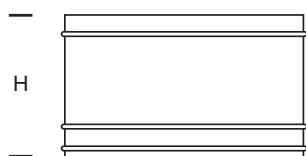
Art.0120 NK



misura		20x15	30x15	40x15	50x15	60x15	70x15	80x15	100x15
H *	mm.	28	28	28	32	32	34	34	34

Ghiera ramata per pennellessa  
Copper plated ferrule for flat paint brush

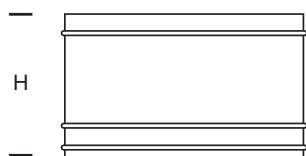
Art.0130 RA



misura		20x15	30x15	40x15	50x15	60x15	70x15	80x15	100x15
H *	mm.	28	28	28	32	32	34	34	34

Ghiera ottonata per pennellessa  
Brass plated ferrule for flat paint brush

Art.0131 OT



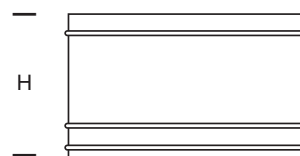
misura		20x15	30x15	40x15	50x15	60x15	70x15	80x15	100x15
H *	mm.	28	28	28	32	32	34	34	34

\* altre altezze e misure sono disponibili su richiesta  
\* different heights and sizes are available on request

## Art. 0135 IN



Ghiera inox per pennellessa  
Stainless steel ferrule for flat paint brush

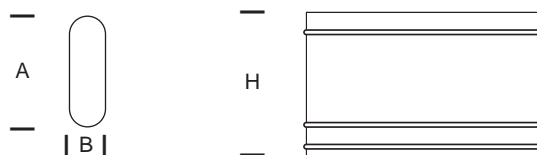


misura		20x15	30x15	40x15	50x15	60x15	70x15	80x15	100x15
H *	mm.	28	28	28	32	32	34	34	34

## Art. 0140 PL



Ghiera plastica per pennellessa  
Plastic ferrule for flat paint brush



misura		30x15	40x15	50x15	60x15	70x15
A	mm.	29,2	39,5	48,8	59,4	69,4
B	mm.	12	12,5	14	14	14
H	mm.	32	32	34	36	36

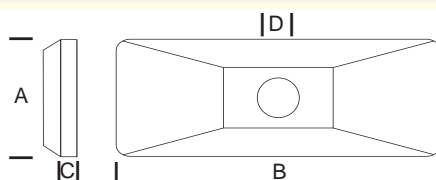
\* altre altezze e misure sono disponibili su richiesta  
\* different heights and sizes are available on request

VIPLAST

## Art. 0200



Assicella per plafone  
Plastic head for wall brush

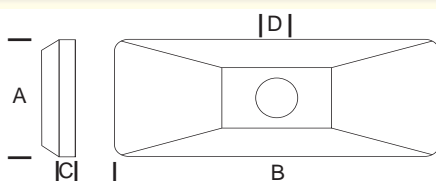


misura		7x3	10x3	12x3	14x4	14x4L	15x5	15x6	16x6,5	17x7	18x8
A	mm.	33	35	35	40	44	49	60	64	69,5	80
B	mm.	73	104	124,5	140	145	150,5	149,5	158	168,5	180
C	mm.	13	13	13	14,5	14,5	14,5	14,5	14,5	14,5	14,5
D	mm.	19	19	19	19	19	19	22	22	22	22

## Art. 0202



Assicella per plafone 2 colori  
Two colours plastic head for wall brush

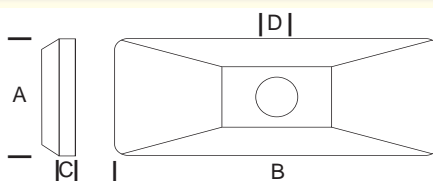


misura		14x4	15x5	15x6	16x6,5	17x7	18x8
A	mm.	40	49	60	64	69,5	80
B	mm.	140	150,5	149,5	158	168,5	180
C	mm.	14,5	14,5	14,5	14,5	14,5	14,5
D	mm.	19	19	22	22	22	22

## Art. 0400



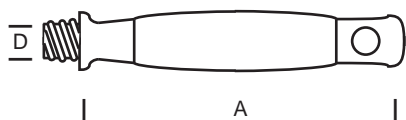
Assicella per plafone tipo leggero  
Plastic head for wall brush light type



misura		15x5	15x6	16x6,5	17x7	18x8
A	mm.	49	60	64	69,5	80
B	mm.	150,5	149,5	158	168,5	180
C	mm.	11	11	11	11	11
D	mm.	19	22	22	22	22

Manico legno gomma misura grande  
Wooden handle with rubber grip big size

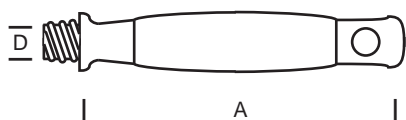
Art.0210 L/G



misura		Passo piccolo	Passo grande
A	mm.	145	145
D	mm.	19	22

Manico legno gomma misura piccola  
Wooden handle with rubber grip small size

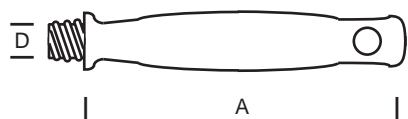
Art.0211 L/G



misura		Passo piccolo
A	mm.	133
D	mm.	19

Manico plastica per plafone  
Plastic handle for wall brush

Art.0210



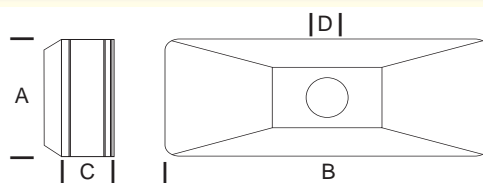
misura		Piccolo	Grande
A	mm.	144	146
D	mm.	19	22



## Art. 0600



Assicella per plafonetta  
Plastic head for wall brush

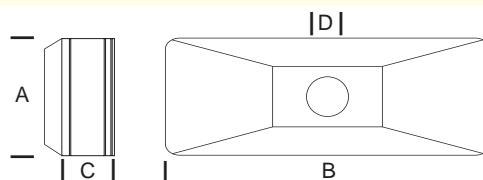


misura		7x3	10x3	16x6,5	17x7	18x8
A	mm.	33	35	35	44	49
B	mm.	73	104	124,5	145	150,5
C	mm.	28	28	28	28	28
D	mm.	19	19	19	19	19

## Art. 0602



Assicella per plafonetta 2 colori  
Two colours plastic head for wall brush

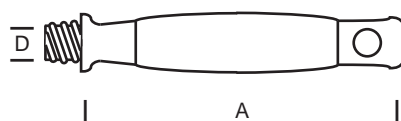


misura		7x3	10x3	16x6,5	17x7	18x8
A	mm.	33	35	35	44	49
B	mm.	73	104	124,5	145	150,5
C	mm.	28	28	28	28	28
D	mm.	19	19	19	19	19

## Art. 0260

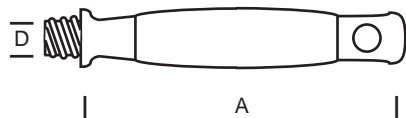


Manico bicomponente plastica gomma per plafone mis. grande  
Two-component plastic handle with rubber grip big size



misura		Passo piccolo	Passo grande
A	mm.	145	145
D	mm.	19	22

Manico bicomponente plastica gomma per plafone mis. piccola  
Two-component plastic handle with rubber grip small size

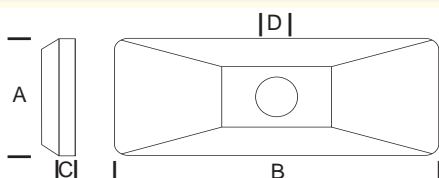


misura		Passo piccolo	
A	mm.	133	
D	mm.	19	



Art. 0260

Assicella per plafone 2 colori innesto a baionetta  
Two colours plastic head for wall brush with bayonet coupling

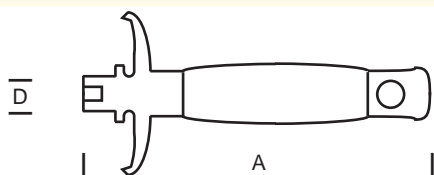


misura		15x5	15x6	16x6,5	17x7	18x8
A	mm.	49	60	64	69,5	80
B	mm.	150,5	149,5	158	168,5	180
C	mm.	11	11	11	11	11
D	mm.	19	22	22	22	22



Art. 0205

Manico legno gomma innesto a baionetta per art. 205  
Wooden handle with rubber grip for art. 205

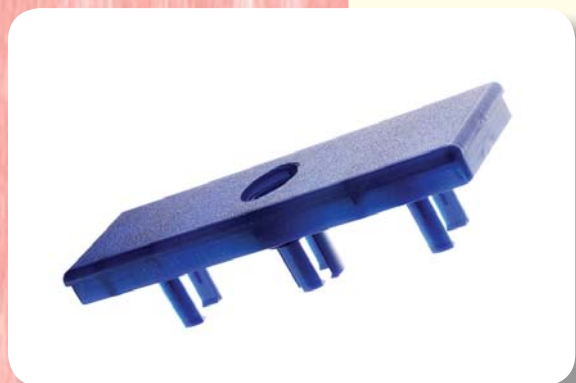


misura		grande	
A	mm.	145	
D	mm.	19	

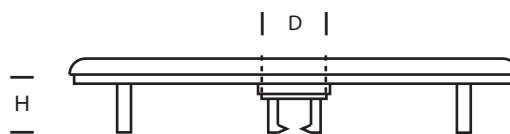


Art. 0215 L/G

## Art. 0300



Assicella plastica per plafoncino  
Flat plastic head for wall brush

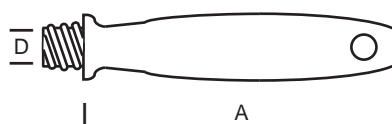


misura		7x3	10x3	12x3	14x4	15x5
H	mm.	27	27	27	27	27
D	mm.	19	19	19	19	19

## Art. 0310



Manico per plafoncino  
Plastic handle for flat wall brush



misura		Piccolo	Grande
A	mm.	122	138
D	mm.	19	19

## Art. 0310 V



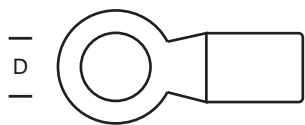
Manico ottagonale per plafoncino  
Plastic handle for flat wall brush



misura		Piccolo	Grande
A	mm.	128	138
D	mm.	19	19

Supporto plastica per plafoncino  
Plastic clip for wall brush

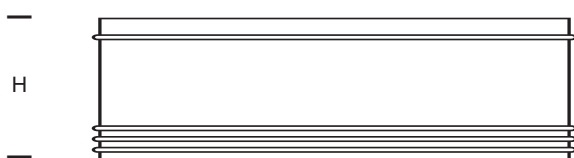
Art.0320



misura			∅
D	mm.		20

Ghiera plafoncino banda stagna H. 30 mm.  
Tin plated ferrule for wall brush H. 30 mm.

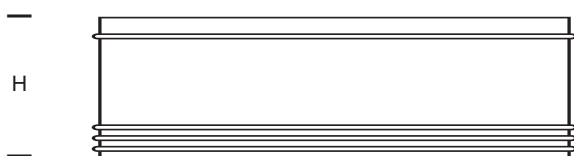
Art.0330 BS



misura		7x3	10x3	12x3	14x4	15x5
H *	mm.	30	30	30	30	30

Ghiera plafoncino nichelata H. 30 mm.  
Nickel plated ferrule for wall brush H. 30 mm.

Art. 0330 NK



misura		7x3	10x3	12x3	14x4	15x5
H *	mm.	30	30	30	30	30

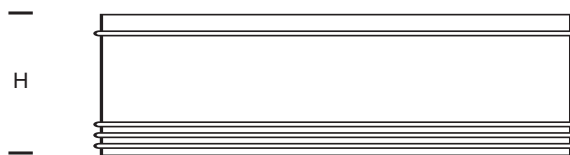
\* altre altezze e misure sono disponibili su richiesta  
\* different heights and sizes are available on request

VIPLAST

## Art. 0330 RA



Ghiera plafoncino ramata H. 30 mm.  
Copper plated ferrule for wall brush H. 30 mm.

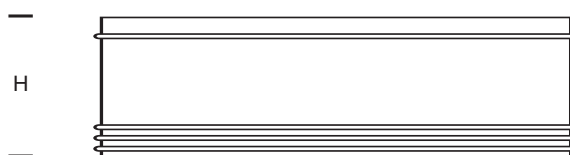


misura		<b>7x3</b>	<b>10x3</b>	<b>12x3</b>	<b>14x4</b>	<b>15x5</b>
H *	mm.	30	30	30	30	30

## Art. 0330 OT



Ghiera plafoncino ottonata H. 30 mm.  
Brass plated ferrule for wall brush H. 30 mm.

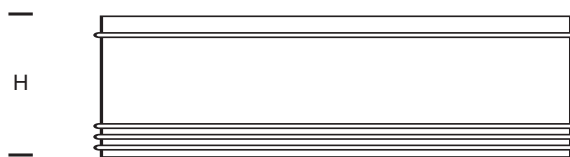


misura		<b>7x3</b>	<b>10x3</b>	<b>12x3</b>	<b>14x4</b>	<b>15x5</b>
H *	mm.	30	30	30	30	30

## Art.0330 IN



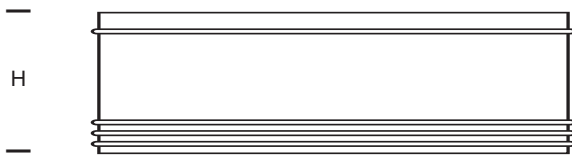
Ghiera plafoncino inox H. 30 mm.  
Stainless steel ferrule for wall brush H. 30 mm.



misura		<b>7x3</b>	<b>10x3</b>	<b>12x3</b>	<b>14x4</b>	<b>15x5</b>
H *	mm.	30	30	30	30	30

Ghiera plafoncino plastica  
Plastic ferrule for wall brush

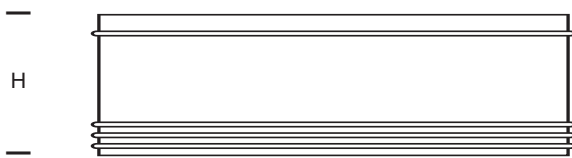
Art.0330 PL



misura		7x3	10x3	12x3	14x4
H	mm.	30	32	32	32

Ghiera plafoncino ovale ramata  
Copper plated oval ferrule for wall brush

Art. 0330 OV



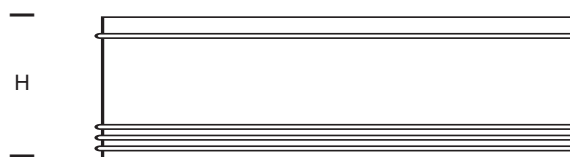
misura		7x3	10x3	12x3	14x4	15x5
H *	mm.	30	30	30	30	30

\* altre altezze e misure sono disponibili su richiesta  
\* different heights and sizes are available on request

## Art. 0335 BS



Ghiera banda stagna tipo "Canarie"  
Tin plated ferrule "Canarie" type

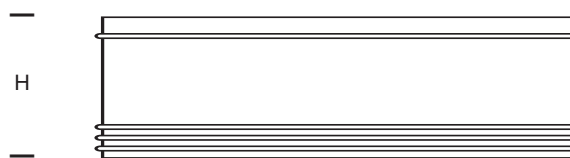


misura		4"	5"	6"	8"
H *	mm.	30	30	30	30

## Art. 0335 RA



Ghiera ramata tipo "Canarie"  
Copper plated ferrule "Canarie" type



misura		4"	5"	6"	8"
H *	mm.	30	30	30	30

\* altre altezze e misure sono disponibili su richiesta  
\* different heights and sizes are available on request

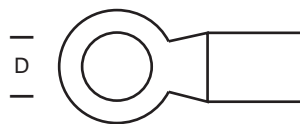
VIPLAST



## Art.0221



Supporto una ala ferro zincato per plafoni  
Zinc plated single clip for wall brushes



misura		Ø	Ø
D	mm.	20	22

## Art.0222



Supporto due ali ferro zincato per plafoni  
Zinc plated double clip for wall brushes

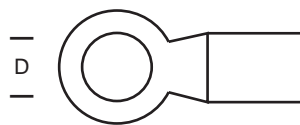


misura		Ø	Ø
D	mm.	20	22

## Art.0224



Supporto una ala ferro nichelato per plafoni  
Nichel plated single clip for wall brushes



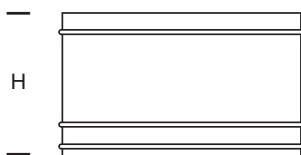
misura		Ø
D	mm.	22



## Art.0150 NK



Ghiera nichelata tipo "Americana"  
Nickel plated ferrule "Americana" type

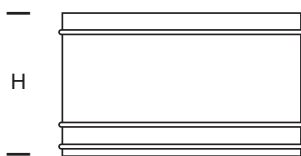


misura		1"	1 1/2"	2"	2 1/2"	3"	4"
H *	mm.	40	40	40	40	40	40

## Art.0150 IN



Ghiera inox tipo "Americana"  
Stainless steel ferrule "Americana" type

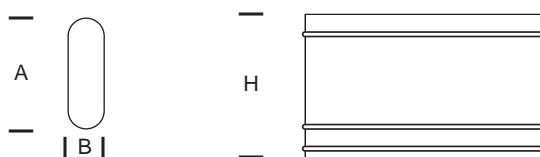


misura		1"	1 1/2"	2"	2 1/2"	3"	4"
H *	mm.	40	40	40	40	40	40

## Art.0150 AM



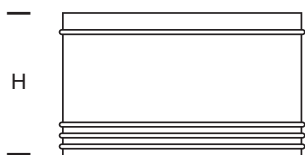
Ghiera plastica per manici legno "Americane"  
Plastic ferrule for woodem handle "Americana" type



misura		25	30	40	50	60	75
A	mm.	30	35	42	53	64	75
B	mm.	21	21	22	23	23	25
H	mm.	40	40	40	40	40	40

Ghiera banda stagna per "Radiatori"  
Tin plated ferrule "Radiator" type

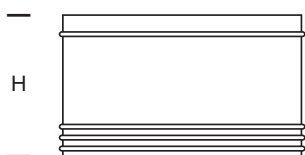
Art.0510 BS



misura		20	30	40	50	60	70
H *	mm.	40	40	40	50	50	50

Ghiera nichelata per "Radiatori"  
Nikel plated ferrule "Radiator" type

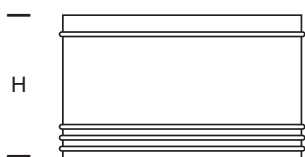
Art.0510 NK



misura		20	30	40	50	60	70
H *	mm.	40	40	40	50	50	50

Ghiera ramata per "Radiatori"  
Copper plated ferrule "Radiator" type

Art.0510 RA



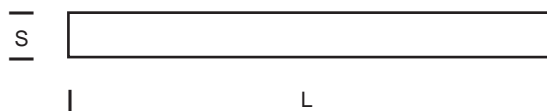
misura		20	30	40	50	60	70
H *	mm.	40	40	40	50	50	50

\* altre altezze e misure sono disponibili su richiesta  
\* different heights and sizes are available on request

## Art.0145



### Spessori in rotolo Brush strips on rolls

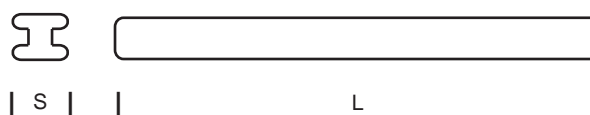


L	mm.	15	18	22	29	32	39	47	52	57	62	67	72	82	92
S	mm.	2,5	2,5	2,5	2,5	2,5	2,5	2,5	2,5	2,5	2,5	2,5	2,5	2,5	2,5
S	mm.	3,5	3,5	3,5	3,5	3,5	3,5	3,5	3,5	3,5	3,5	3,5	3,5	3,5	3,5
S	mm.	4,5	4,5	4,5	4,5	4,5	4,5	4,5	4,5	4,5	4,5	4,5	4,5	4,5	4,5
S	mm.	6,0	6,0	6,0	6,0	6,0	6,0	6,0	6,0	6,0	6,0	6,0	6,0	6,0	6,0

## Art.0340



### Listelli per plafoncino 7 mm. - 4,5 mm. Strips for wall brush 7 mm. - 4,5 mm.



misura	<b>7x3</b>	<b>10x3</b>	<b>12x3</b>	<b>14x4</b>	<b>15x5</b>
L	59	89	109	129	139
S	4,5	4,5	4,5	4,5	4,5
S	7,0	7,0	7,0	7,0	7,0



# **ViPLAST**

**STAMPAGGIO MATERIE PLASTICHE**

Via del Progresso, 20  
35010 Vigonza / PD (Italy)  
Tel. +39 049 8930725  
Fax +39 049 8932796  
[www.viplastsrl.it](http://www.viplastsrl.it)  
e-mail: [info@viplastsrl.it](mailto:info@viplastsrl.it)